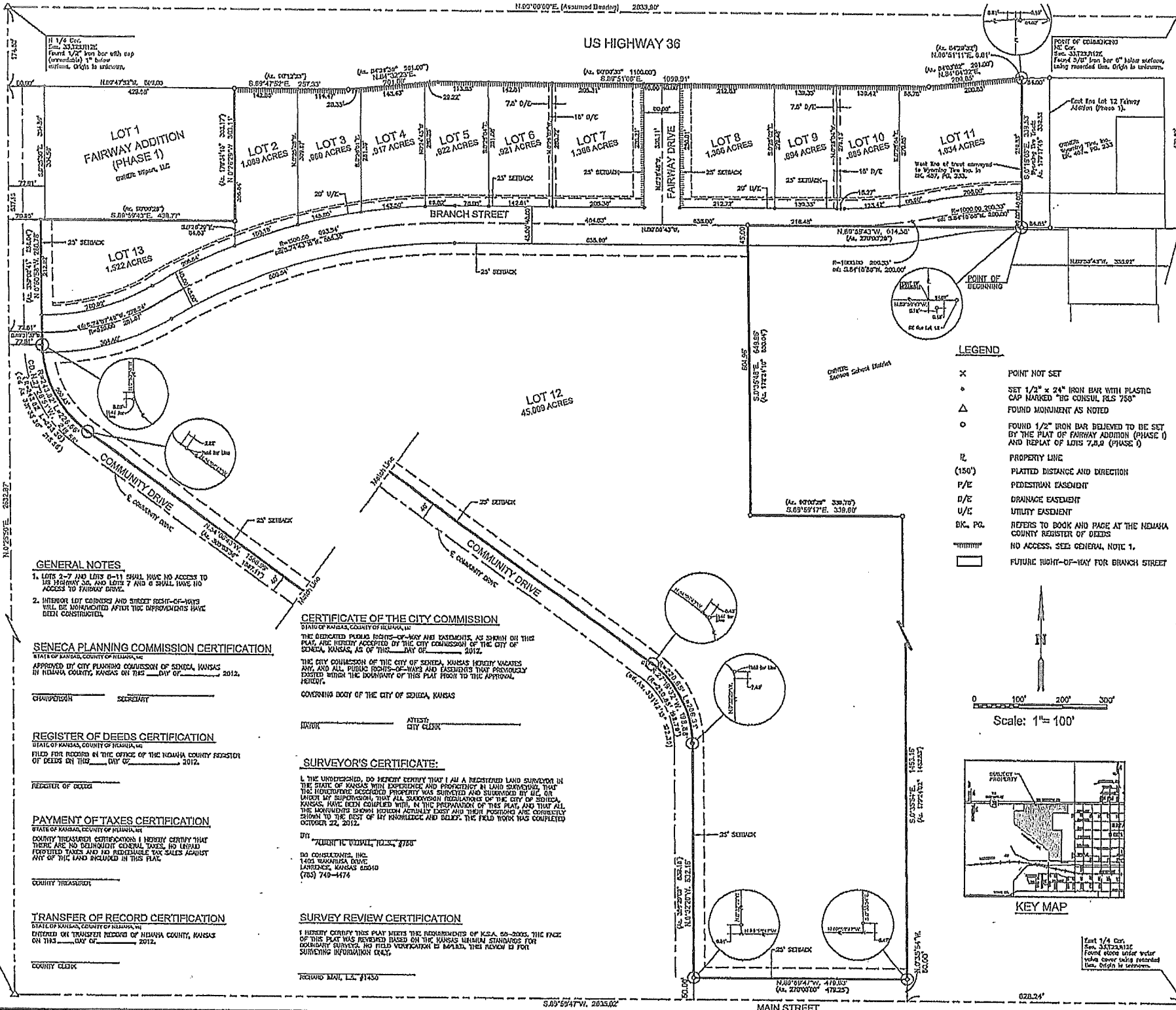


US HIGHWAY 36



GENERAL NOTES

1. LOTS 2-7 AND LOTS 8-11 SHALL HAVE NO ACCESS TO US HIGHWAY 36, AND LOTS 7 AND 8 SHALL HAVE NO ACCESS TO FAIRWAY DRIVE.
2. INTERIOR LOT CORNERS AND STREET RIGHT-OF-WAYS WILL BE MONUMENTED AFTER THE IMPROVEMENTS HAVE BEEN CONSTRUCTED.

SENECA PLANNING COMMISSION CERTIFICATION

STATE OF KANSAS, COUNTY OF NEUMAH, MO. APPROVED BY CITY PLANNING COMMISSION OF SENECA, KANSAS ON THIS ____ DAY OF _____, 2012.

COMMISSIONER _____ SECRETARY _____

REGISTER OF DEEDS CERTIFICATION

STATE OF KANSAS, COUNTY OF NEUMAH, MO. FILED FOR RECORD IN THE OFFICE OF THE NEUMAH COUNTY REGISTER OF DEEDS ON THIS ____ DAY OF _____, 2012.

REGISTER OF DEEDS _____

PAYMENT OF TAXES CERTIFICATION

STATE OF KANSAS, COUNTY OF NEUMAH, MO. COUNTY TREASURER CERTIFIES I HEREBY CERTIFY THAT THERE ARE NO DELINQUENT GENERAL TAXES, NO UNPAID FORFEITED TAXES AND NO REDEMPTIBLE TAX SALES AGAINST ANY OF THE LAND INCLUDED IN THIS PLAT.

COUNTY TREASURER _____

TRANSFER OF RECORD CERTIFICATION

STATE OF KANSAS, COUNTY OF NEUMAH, MO. OFFICER ON TRANSFER RECORD OF NEUMAH COUNTY, KANSAS ON THIS ____ DAY OF _____, 2012.

COUNTY CLERK _____

CERTIFICATE OF THE CITY COMMISSION

STATE OF KANSAS, COUNTY OF NEUMAH, MO. THE DEDICATED PUBLIC RIGHTS-OF-WAY AND EASEMENTS, AS SHOWN ON THIS PLAT, ARE HEREBY ACCEPTED BY THE CITY COMMISSION OF THE CITY OF SENECA, KANSAS, AS OF THIS ____ DAY OF _____, 2012.

THE CITY COMMISSION OF THE CITY OF SENECA, KANSAS HEREBY VACATES ANY AND ALL PUBLIC RIGHTS-OF-WAY AND EASEMENTS THAT PREVIOUSLY EXISTED WITHIN THE BOUNDARY OF THIS PLAT FROM THE APPROVAL HEREOF.

GOVERNING BODY OF THE CITY OF SENECA, KANSAS

MAYOR _____ ATTEST: CITY CLERK _____

SURVEYOR'S CERTIFICATE:

I, THE UNDERSIGNED, DO HEREBY CERTIFY THAT I AM A REGISTERED LAND SURVEYOR IN THE STATE OF KANSAS WITH EXPERIENCE AND PROFICIENCY IN LAND SURVEYING, THAT THE INSTRUMENT DESCRIBED PROPERTY WAS SURVEYED AND SUBMITTED BY ME OR UNDER MY SUPERVISION, THAT ALL SURVEYING REGULATIONS OF THE CITY OF SENECA, KANSAS, HAVE BEEN COMPLIED WITH, IN THE PREPARATION OF THIS PLAT, AND THAT ALL THE MONUMENTS SHOWN HEREON ACTUALLY EXIST AND THEIR POSITIONS ARE CORRECTLY SHOWN TO THE BEST OF MY KNOWLEDGE AND BELIEF. THE FIELD WORK WAS COMPLETED OCTOBER 22, 2012.

BY: _____ DO CONSULTANTS, INC. 1403 WAGONWHEEL DRIVE LAWRENCE, KANSAS 66040 (785) 749-4476

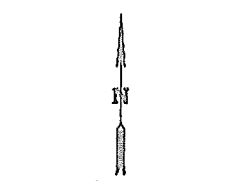
SURVEY REVIEW CERTIFICATION

I HEREBY CERTIFY THIS PLAT MEETS THE REQUIREMENTS OF K.S.A. 82-2003. THE FACTS OF THIS PLAT WAS REVIEWED BASED ON THE KANSAS SURVEYING STANDARDS FOR BOUNDARY SURVEYS. NO FIELD VERIFICATION IS REQUIRED. THIS REVIEW IS FOR SURVEYING INFORMATION ONLY.

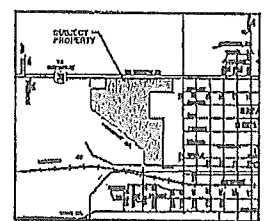
RECEIVED MAIL, L.S. #1430

LEGEND

- × POINT NOT SET
- SET 1/2" x 24" IRON BAR WITH PLASTIC CAP MARKED "HS CONSULT PLS 750"
- △ FOUND MONUMENT AS NOTED
- FOUND 1/2" IRON BAR BELIEVED TO BE SET BY THE PLAT OF FAIRWAY ADDITION (PHASE I) AND REPLAT OF LOTS 7,8,9 (PHASE I)
- PROPERTY LINE
- (150') PLATED DISTANCE AND DIRECTION
- P/E PEDESTRIAN EASEMENT
- D/E DRAINAGE EASEMENT
- U/E UTILITY EASEMENT
- DK. PG. REFERS TO BOOK AND PAGE AT THE NEUMAH COUNTY REGISTER OF DEEDS
- NO ACCESS, SEE GENERAL NOTE 1.
- FUTURE RIGHT-OF-WAY FOR BRANCH STREET



Scale: 1" = 100'



KEY MAP

Center 1/4 Cor. Sta. 23323.01125 Found 1/2" iron bar with cap (presumably) in below surface. Origin is unknown.

East 1/4 Cor. Sta. 23323.01125 Found stone under trailer wheel cover using rebar. Origin is unknown.